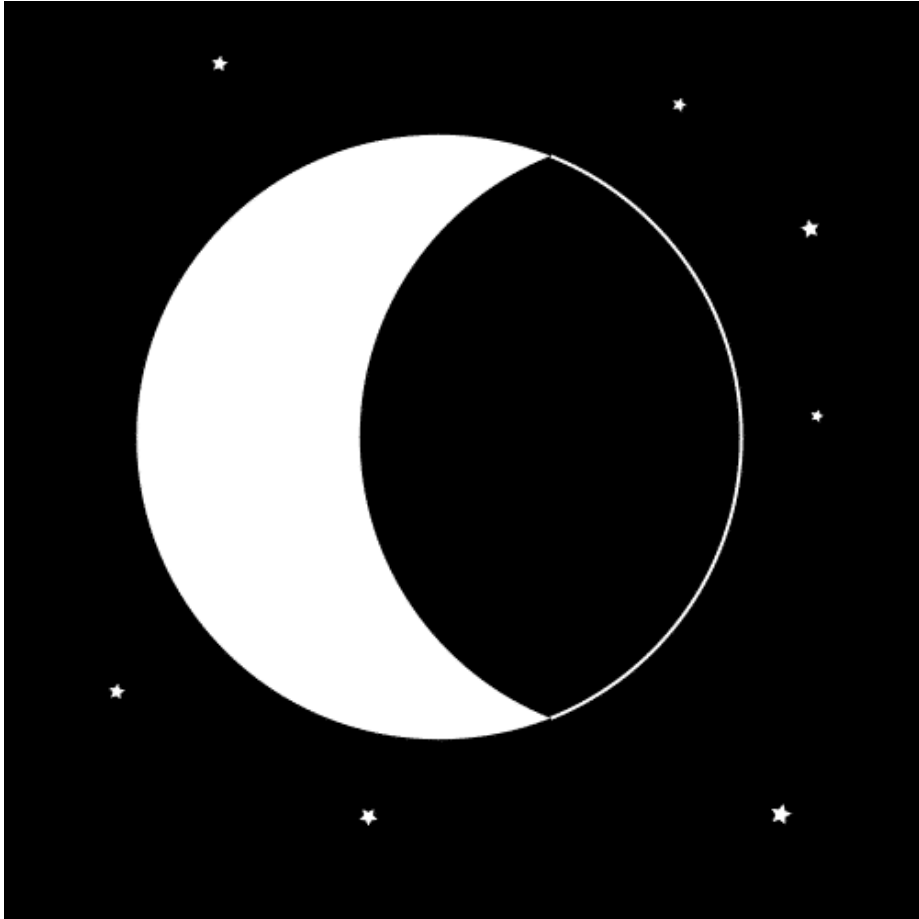


# BITS



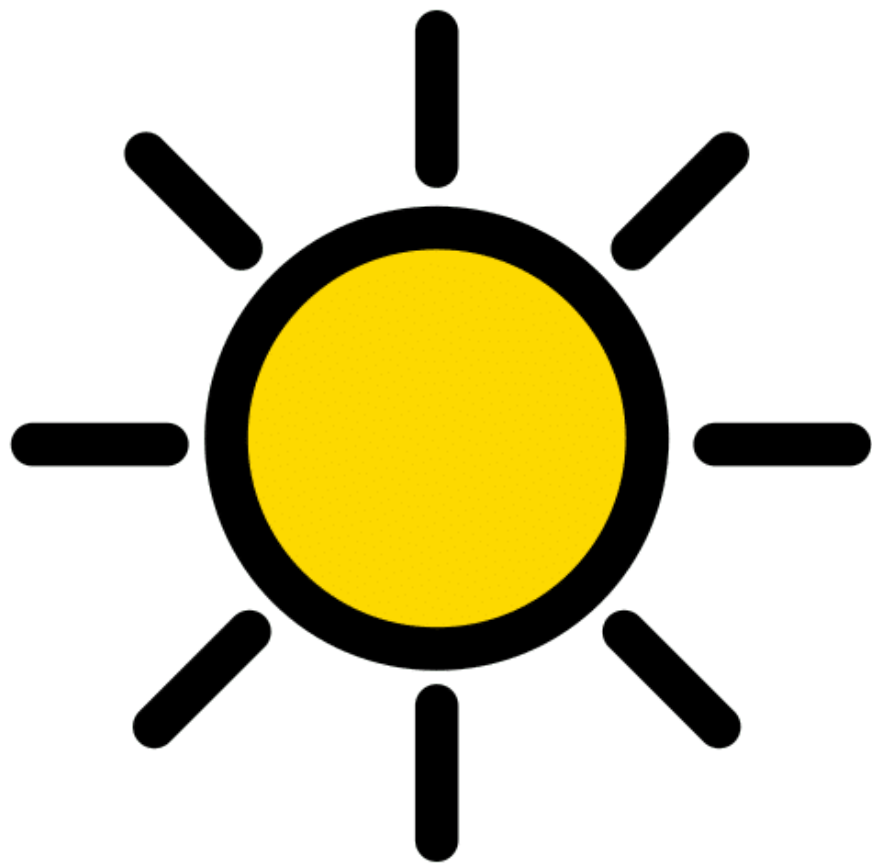
## *Quan el sol es pon*

- Recurs per treballar les imatges i les paraules de la cançó QUAN ES PON EL SOL.
- Desenvolupar la memòria.
- Augmentar el lèxic.
- El podeu fer servir en format paper i en presentació digital.
- Imatges i paraules que es treballen: sol, lluna, tortuga, elefant, girafa, zebra, guineu, lleó, mico i ratolí.



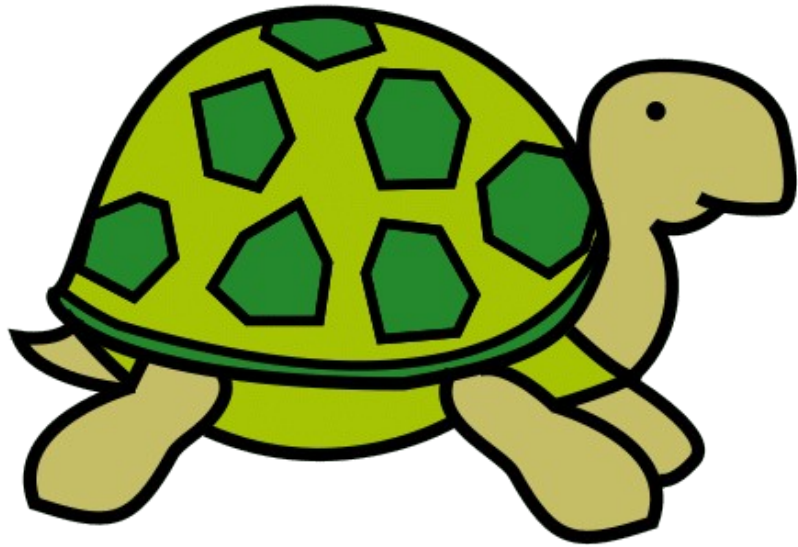
LLUNA

lluna



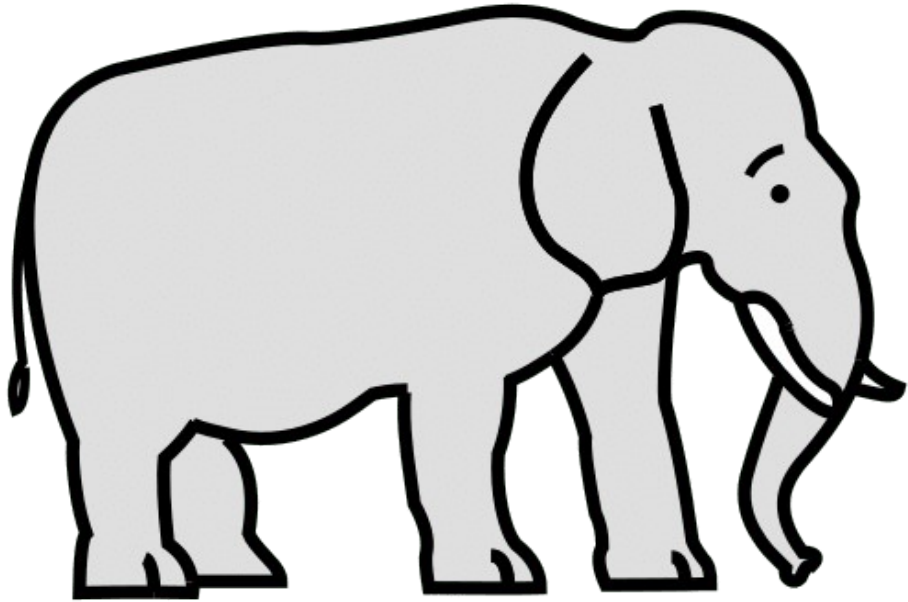
SOL

sol



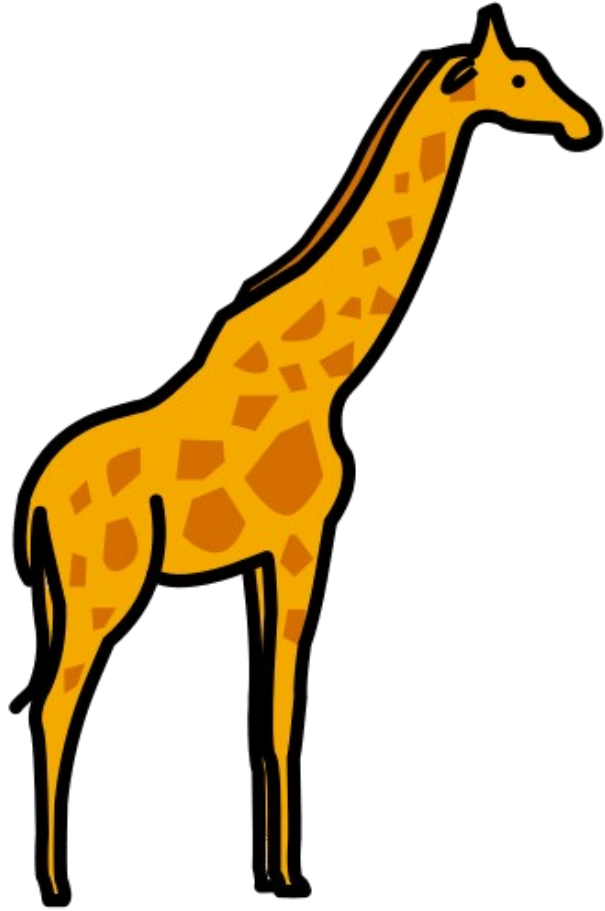
TORTUGA

tortuga



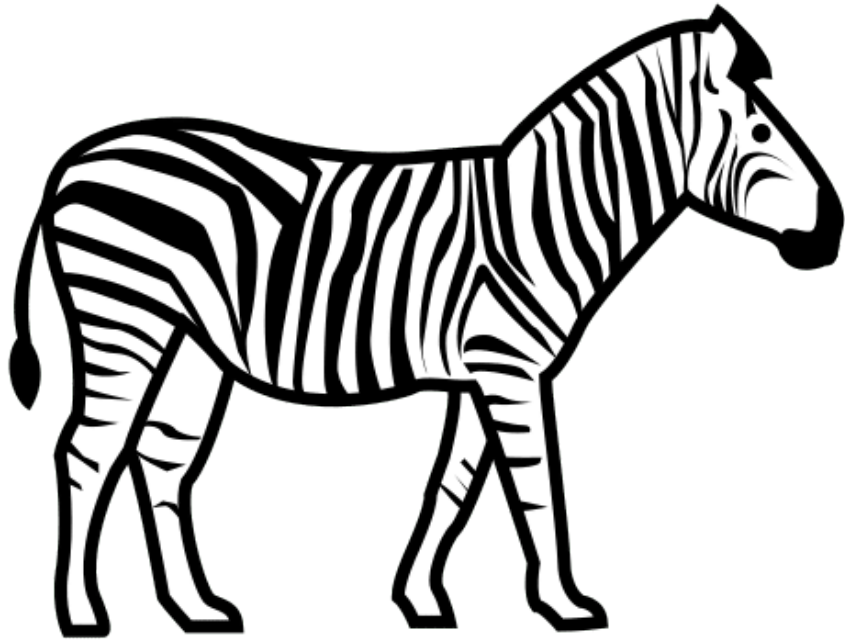
ELEFANT

elefant



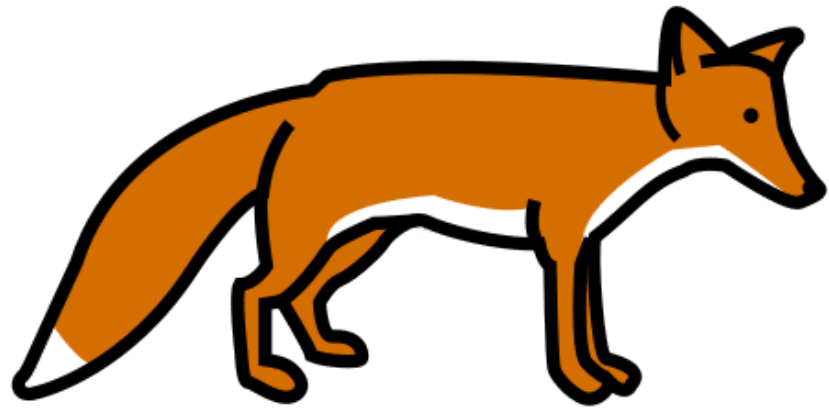
GIRAFFA

girafa



ZEBRA

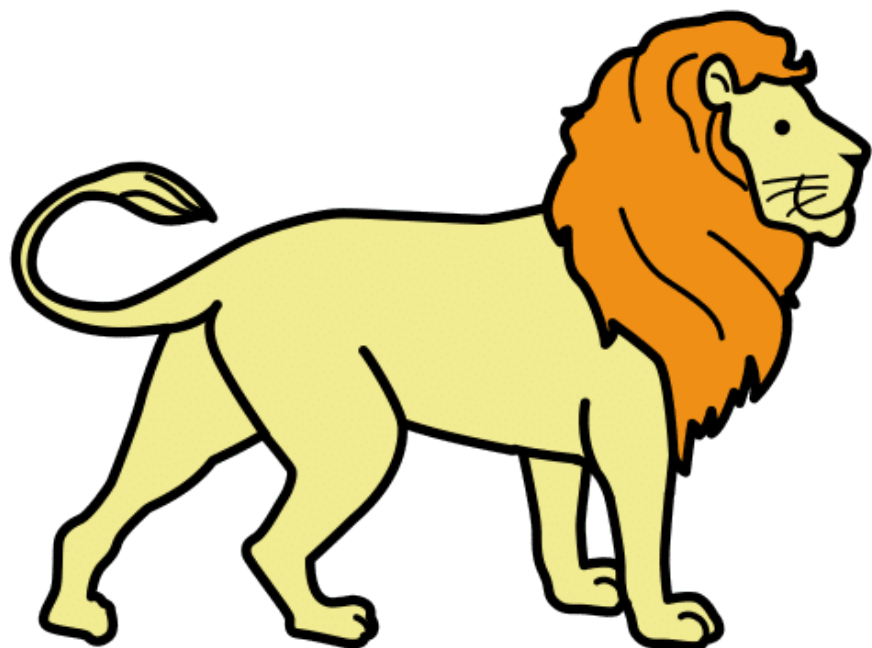
zebra



GUINEU

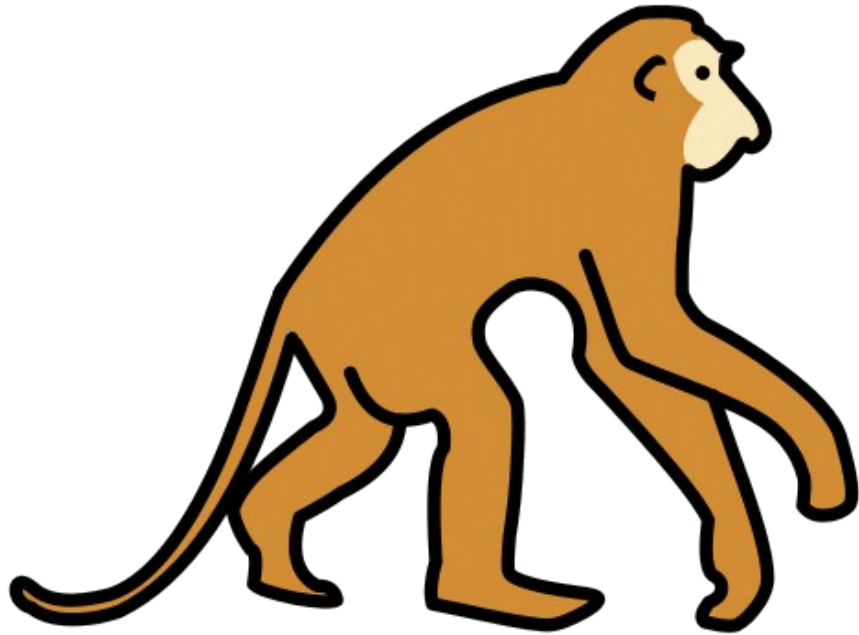
guineu





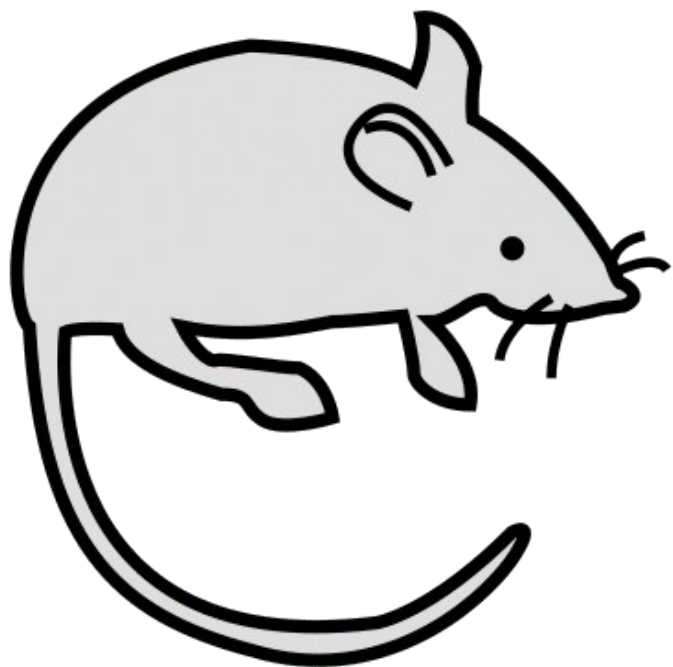
LLEÓ

lleó



MICO

mico

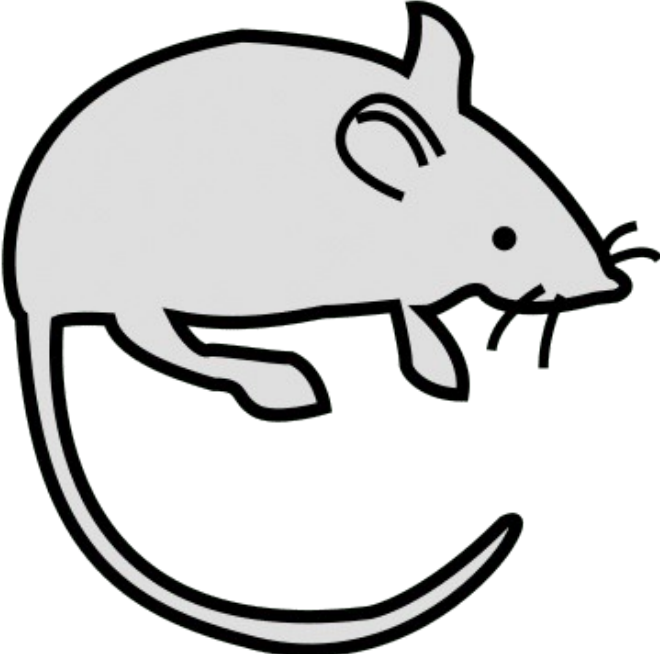


RATOLÍ

ratolí

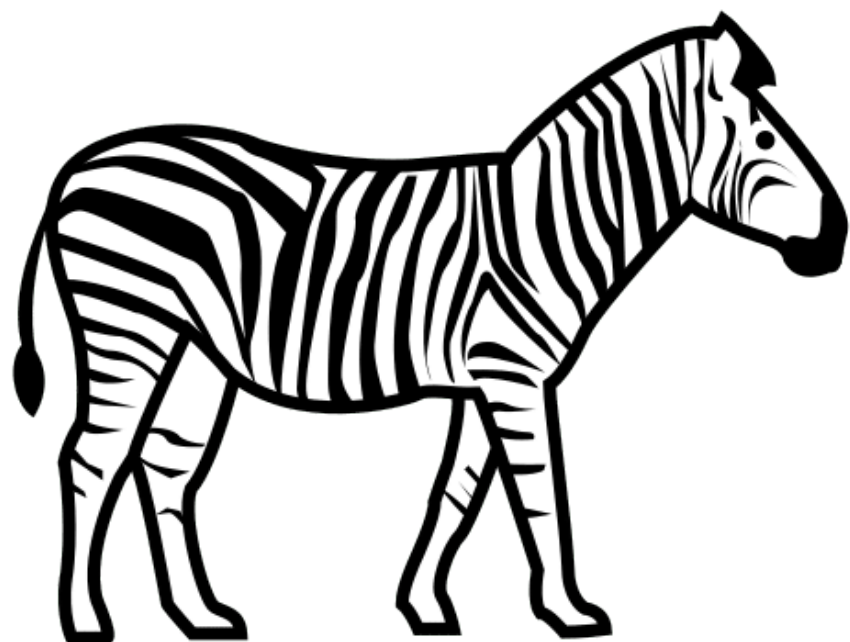
RATOLÍ

ratolí



ZEBRA

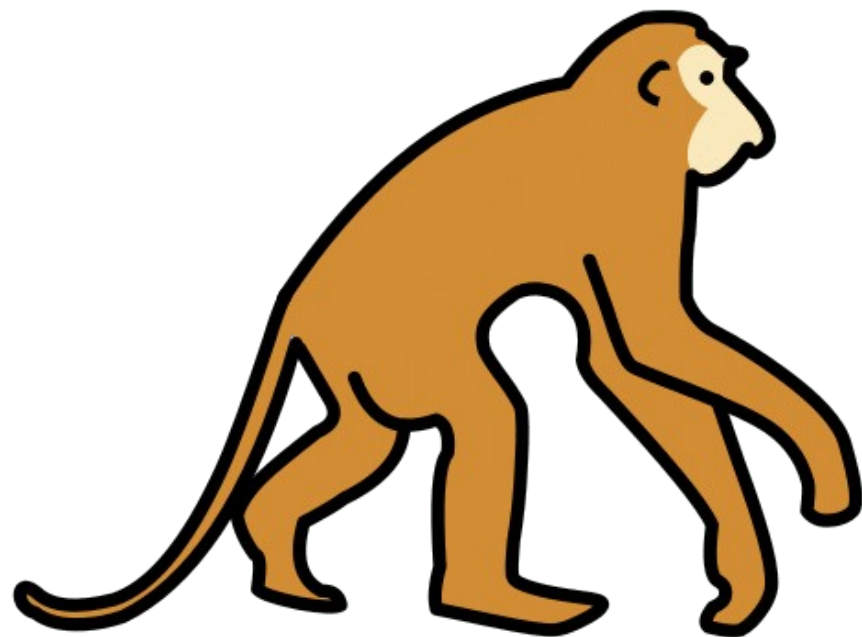
zebra



MICO

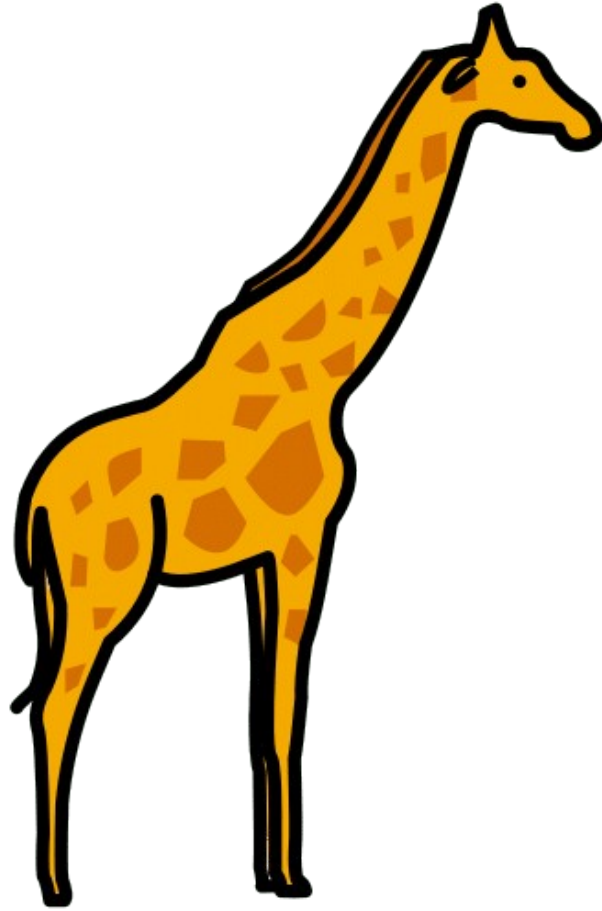
mico





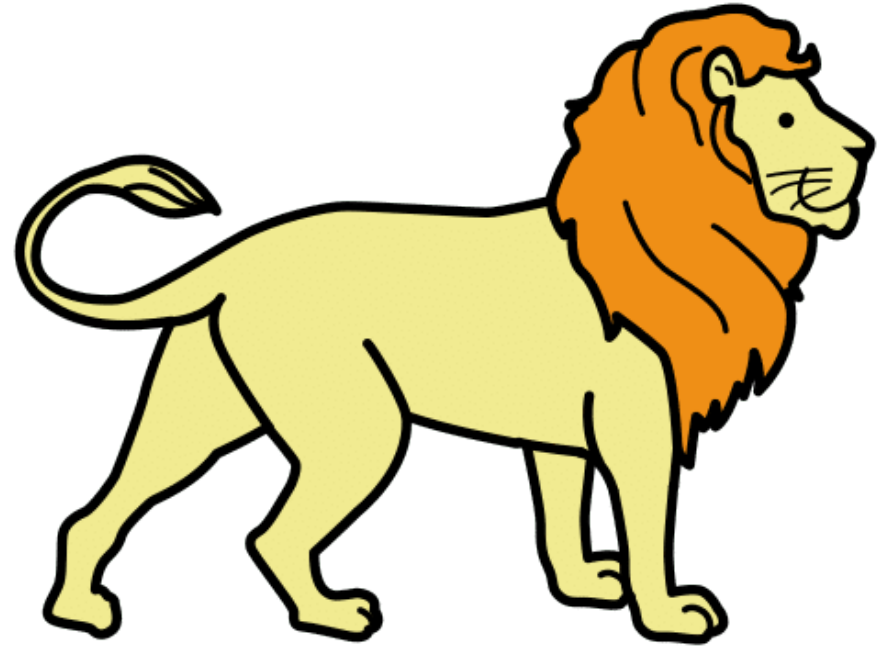
**GIRAFFA**

**girafa**



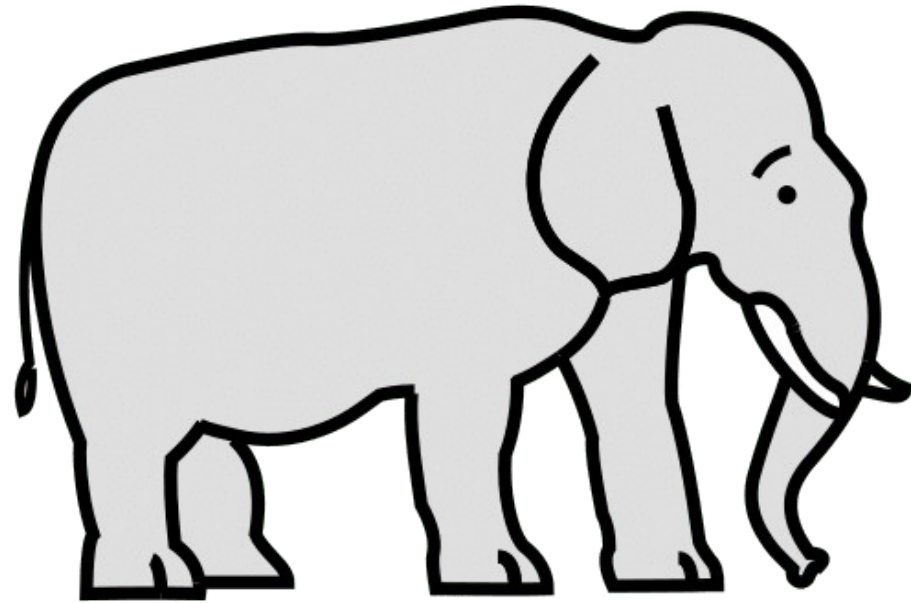
LLEÓ

lleó



ELEFANT

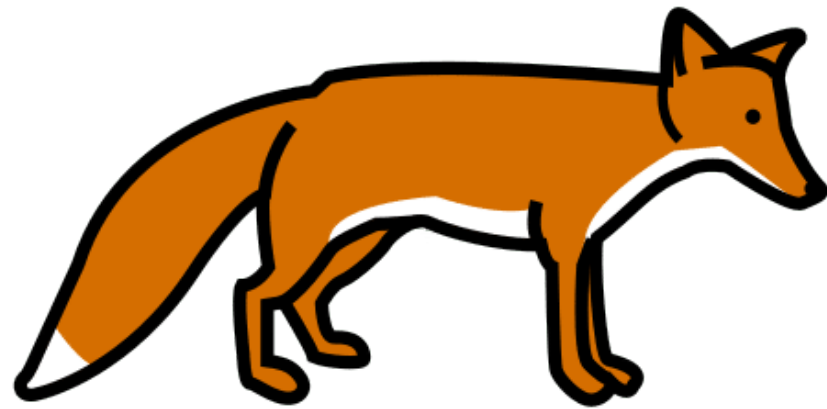
elefant



GUINEU

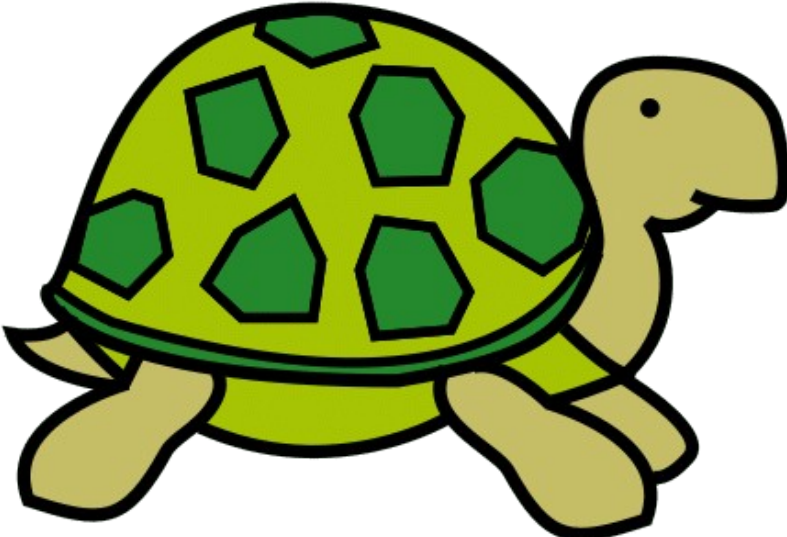
guineu





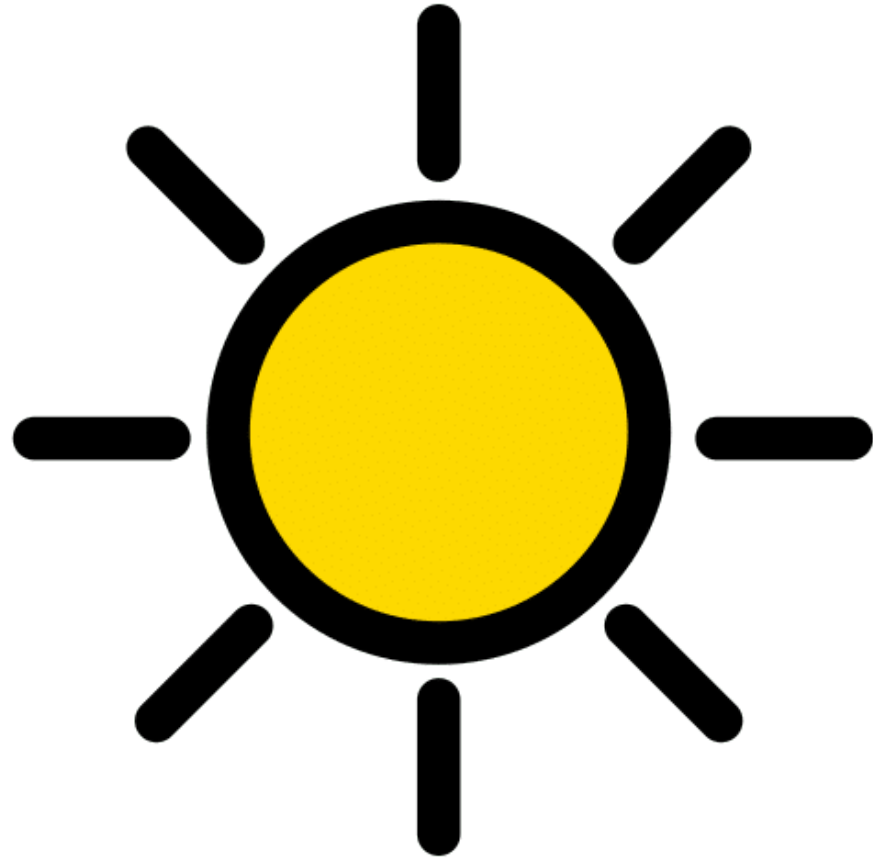
TORTUGA

tortuga



SOL

sol



LLUNA

lluna

